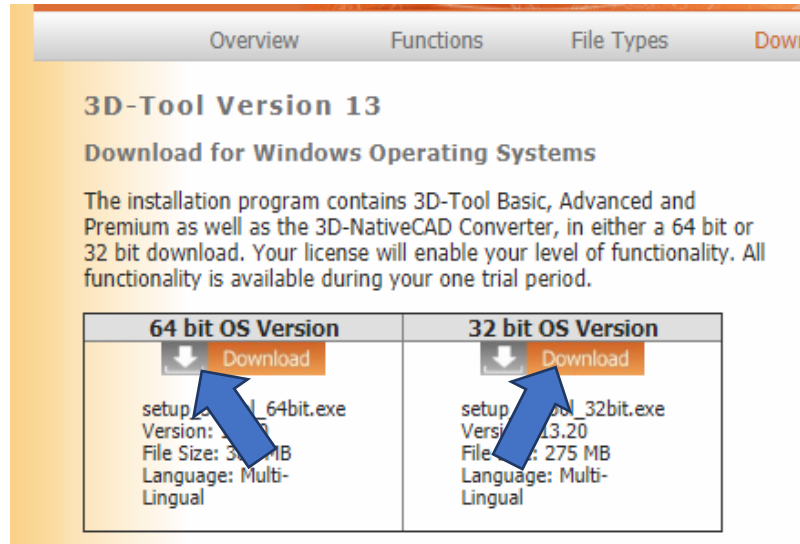


Installation and Licensing 3D-Tool Software

Also applies to a New Computer, and Updated major software Versions

Click [on-line FAQ](#) for other situations

- 1) Download the 3D-Tool software installer (32 or 64 bit) from the website Download page:
http://www.3d-tool-usa.com/en_cad-viewer-download.htm
(Not needed if you already downloaded and installed the Trial version)



- 2) Install the software

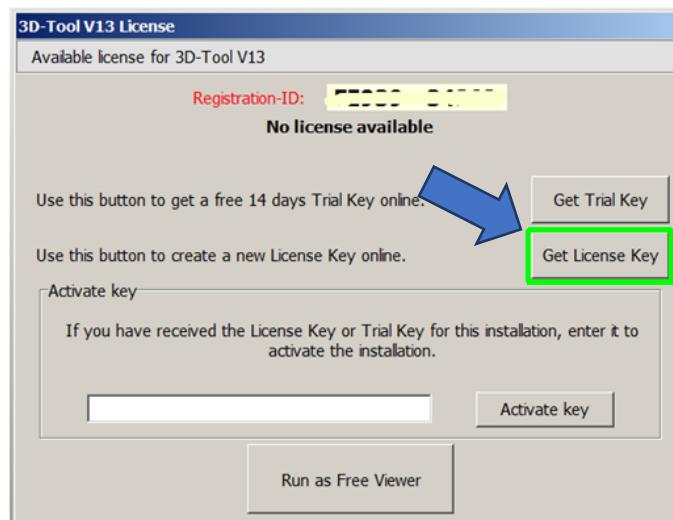
- 3) Find e-mail from Support@3D-Tool-usa.com containing a PDF attachment.
The PDF is your **License Certificate** which contains your **Authorization Key**.
It will look something like this: XX88-88XX-X88X

The **Authorization Key** is your **proof of ownership**, and it allows you to obtain a **License Key** specifically for your **current PC**.

On replacement PC's or when reinstalling Use the **Authorization Key** to obtain a new **License Key** using the same procedure below.

- 4) Launch the 3D-Tool application

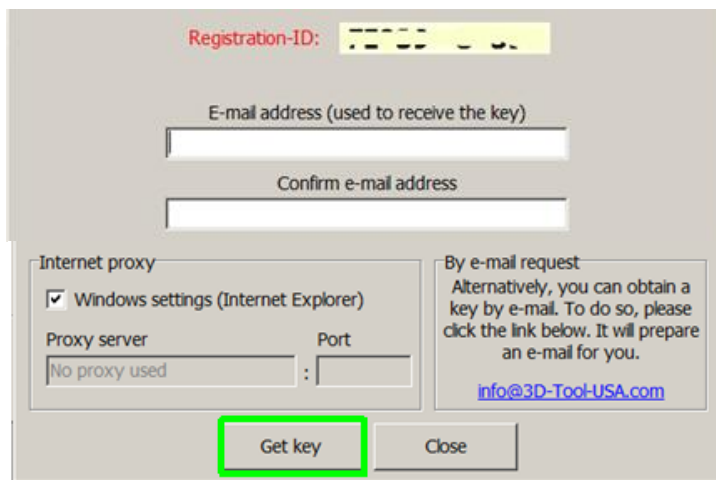
- 5) Click "Get License Key" on splash screen dialog



6) Type (or paste) Authorization Key from PDF license certificate



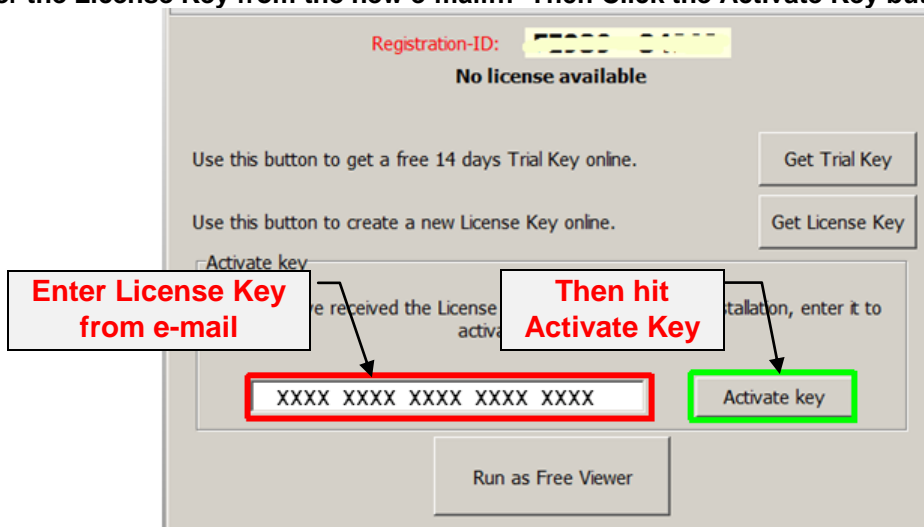
7) Enter the e-mail address you want your PC License key sent to... Then hit Get Key (or Create Key)



8) Within 30 minutes you will receive an e-mail. Go to your email program and find the License Key that was created for the specific PC you installed 3D-Tool on. The License Key will look something like this: XXXX XXXX XXXX XXXX XXXX

9) Launch the 3D-Tool application again

10) Enter the License Key from the new e-mail... Then Click the Activate Key button



Troubleshooting

- Definitions of “Keys” and ID’s

- **Serial Number**, 5 digits: **12345**
 - Number assigned to your purchased software
 - Does not change from Version to Version
 - It is found on your License Certificate, and in 3D-Tool: Options > About 3D-Tool
 - Please include the Serial Number in all correspondence.
- **Authorization Key**, 3 groups of 4 alphanumeric: **XX88-88XX-X88X**
 - Only found on **License Certificate** PDF.
 - Assigned to your **Version** of purchased software
 - Proof of ownership of a particular Software package and Major Version
Example: 3D-Tool Premium - Version 13
 - Required for on-line License generation
- **Registration-ID**, 2 groups of 5 alphanumeric: **ABC12-34DEF**
 - Unique number created by the software on a particular computer.
 - The number will be different on every computer the application is installed on.
- **License Key**, 5 groups of 4 alphanumeric: **XX88 XX88 XX88 XX88 XX88**
 - Unique number sent to you after following Licensing instructions.
 - The License Key activates your version software on a particular computer.
 - The number will be different on every computer the application is installed on.

- Explanation of Minor vs. Major “Update”

When notified that “a new version is available”, be careful....

- You own a particular “major” Version, for example 12.
- Minor version “Updates” are free, for example going from 12.10 to 12.30
- Major version “Updates” are not free, for example: 12.x to 13.x
 - Major version “Updates” can be purchased at a modest fee:
https://3d-tool-usa.com/en_cad-viewer-shop.htm

- Receive the following error during licensing? Please contact Support@3D-Tool-USA.com

- Our automated licensing system protects against frequent license requests, and just indicates that we need to manually process your request.
- Send your Serial Number, Authorization Key, Registration-ID
- Please include a reason for the recent computer change.

